

Smart Displacement Type Level Transmitter

Issued : Dec. 15, 2000	Page : 3-1-1
Effective : Jul. 1, 2003	UNIT : 1000YEN

SLX110-I II III IV V VI VII VIII-IX X XI -XII

*8

Basic model Number

Basic price(1000Yen)

Medium type For specific gravity (0.4 to 1.6) :	SLX110-		698
Low type For specific gravity (0.1 to 0.4) :	SLX120- *1		698

Selections

Additional price (1000Yen)

I	Output/ Communication	Analog 4 to 20mA output (Standard)	1			0
		Digital (DE protocol) output *5	2			0
II	Measuring range (mm)	0 to 300	0	3		Refer to table 1
		0 to 350	A	3		
		0 to 400	0	4		
		0 to 450	A	4		
		0 to 500	0	5		
		0 to 600	0	6		
		0 to 700	0	7		
		0 to 800	0	8		
		0 to 1000	1	0		
		0 to 1200	1	2		
		0 to 1500	1	5		
		0 to 2000	2	0		
		Others	X	X		
						Refer to factory
III	Connection	External type Side – Side	Code for table 1: S-S		1	Refer to table 1
		External type Side – Bottom	S-B		2	
		External type Top – Bottom	T-B		3	
		External type Top – Side	T-S		4	
		Internal Top L1 length is required when ordering	T		5	
		Others			X	Refer to factory
IV	Main materials	Bonnet/ Chamber	Float	Torque tube/ Housing		Refer to table 1
		Carbon steel	SUS316L	Carbon steel	1	
		SUS304	SUS316L	SCS13A	2	
		SUS316	SUS316L	SCS14A	3	
		SUS316L	SUS316L	SCS16A	4	
		Others			X	Refer to factory
V	Other materials *3 (Temperature range *2)	Torque tube : Inconel (350 to 400°C)		U		98
		Torque tube : Inconel (200 to 350°C)		M		95
		Torque tube :Inconel(0 to 200°C)		A		85
		Torque tube:SUS316L(0 to 200°C)		E		0
		Torque tube:SUS316L(-196 to 0°C)Selection "2","3" or "4" must be selected for "IV"		D		18
		Torque tube : Hastelloy C(-40 to 200°C)Selection "4" must be selected for "IV material" *2		W		Refer to factory
		Others		X		Refer to factory
VI	Pressure rating (Type of Joint) *7	JIS10K (RF)			1	Refer to table 1
		JIS20K (RF)			2	
		JIS30K (RF)			3	
		JIS63K (RF)			4	
		ANSI150 (RF smoothing)			A	
		ANSI150 (RF serration)			B	
		ANSI300 (RF smoothing)			C	
		ANSI300 (RF serration)			D	
		ANSI600 (RF smoothing)			E	
		ANSI600 (RTJ)			F	
		JPI150 (RF)			G	
		JPI300 (RF)			H	
		JPI600 (RF)			J	
		JPI600 (RTJ)			K	
		Others *4			X	
						Refer to factory
VII	Flange size	1.5in./40mm	For External type		1	0
		2in./50mm	For External type		2	0
		3in./80mm	For internal type (Medium type only)		3	0
		4in./100mm	For internal type		4	0
		5in./125mm *1	For internal type(Low type only)		5	20
		Others			X	Refer to factory
VIII	Meter body	Left side			1	0
		Right side			2	0

*1) Pressure rating "4,E,F,J and K" are not available.

*2) Float material becomes Hastelloy C.

For price, refer to factory.

*3) When "D" or "W" is selected, material of bolts and nuts for bonnet is SUS. For the others, alloy steel.

When U, M, A, or E is selected with SUS, specify Y131.

*4) For class 900, consult with sales.

Higher than class 1500 are not available.

*5) External Zero Switch function is not available.

*6) For specific gravity measurement, specify "Z" at the end of the standard model no. and specify the measured specific gravity range

*7) RF flange is used for JIS and JPI (Excluding JPI160(RTJ))

*8) When including standard specifications (Y-SPEC)

Specify "Y" at the end of the standard model no. and specify "Y no."

If 2 or more "Y-SPEC" is selected, consult with sales.

Smart Displacement Type Level Transmitter

Issued : Dec. 15, 2000	Page : 3-12
Effective : Dec. 1, 2002	UNIT : 1000YEN

Table 1. Additional charges

Code : S-S, S-B, T-B, T-S (Chamber+Bonnet+Float+Torque tube housing)

Code : T (Bonnet+Float+Torque tube housing)

				Medium type JIS10K, 20K, 30K, ANSI/JPI150, 300							
				Code : S-S, S-B, T-B, T-S				Code : T			
				IV Main Materials				IV Mail Materials			
				Carbon steel	SUS304	SUS316	SUS316L	Carbon steel	SUS304	SUS316	SUS316L
				1	2	3	4	1	2	3	4
Measuring range	0-300	03		84	376	466	529	0	135	229	281
	0-350	A3		85	379	472	535	2	136	231	282
	0-400	04		86	382	478	541	4	137	233	283
	0-450	A4		88	385	484	547	6	139	235	285
	0-500	05		90	389	491	554	8	141	237	287
	0-600	06		93	395	503	567	11	144	239	290
	0-700	07		97	402	516	580	14	147	242	293
	0-800	08		99	408	526	590	17	150	245	296
	0-1000	10		102	414	541	605	20	154	249	300
	0-1200	12		108	424	561	625	26	159	254	306
	0-1500	15		115	439	593	656	33	166	262	312
	0-2000	20		128	466	643	707	46	179	275	326

				Medium type JIS63K, ANSI/JPI600							
				Code : S-S, S-B, T-B, T-S				Code : T			
				IV Main Materials				IV Main Materials			
				Carbon steel	SUS304	SUS316	SUS316L	Carbon steel	SUS304	SUS316	SUS316L
				1	2	3	4	1	2	3	4
Measuring range	0-300	03		783	1202	1278	1278	414	668	732	758
	0-350	A3		786	1208	1287	1303	415	669	733	759
	0-400	04		789	1214	1296	1328	416	671	734	760
	0-450	A4		792	1221	1306	1354	418	673	736	761
	0-500	05		795	1228	1316	1380	420	675	738	763
	0-600	06		801	1240	1335	1399	423	678	741	766
	0-700	07		808	1253	1355	1418	427	681	745	770
	0-800	08		814	1265	1373	1436	430	684	747	773
	0-1000	10		821	1278	1393	1456	433	687	750	776
	0-1200	12		827	1308	1423	1491	438	692	755	781
	0-1500	15		834	1342	1469	1532	446	700	763	789
	0-2000	20		859	1405	1545	1609	458	712	776	802

				For Low type JIS10K, 20K, 30K, ANSI/JPI150, 300							
				Code : S-S, S-B, T-B, T-S				Code : T			
				IV Main Materials				IV Main Materials			
				Carbon steel	SUS304	SUS316	SUS316L	Carbon steel	SUS304	SUS316	SUS316L
				1	2	3	4	1	2	3	4
Measuring range	0-300	03		237	649	776	839	0	185	255	293
	0-350	A3		238	658	785	848	3	186	256	294
	0-400	04		239	667	794	857	5	188	258	296
	0-450	A4		240	677	804	867	7	190	260	298
	0-500	05		242	687	814	877	9	192	262	300
	0-600	06		245	706	833	896	12	195	265	303
	0-700	07		249	725	852	916	15	199	268	306
	0-800	08		252	743	870	934	18	201	271	309
	0-1000	10		255	763	890	954	22	204	275	312
	0-1200	12		260	799	926	991	28	210	281	316
	0-1500	15		268	839	966	1031	36	217	287	326
	0-2000	20		281	916	1043	1106	49	229	300	339

When ordering, specify the following operating conditions.

Fluid name

Type of Gas

Specific gravity	For liquid level measurement	
	For boundary surface measurement:	Upper fluid Lower fluid
	For specific gravity measurement:	measured sp. gr. range

Temperature	Normal	°C
	Minimum	°C
	Maximum	°C
Pressure	Normal	kPa
	Maximum	kPa

The L1 length (Refer to the fig. 1)

↑ Must be specified when the connection type "5", internal float model top is selected
note) Round up after the decimal points, and use "mm" unit.

← Must be specified

Note) Specify triple digits after the decimal points

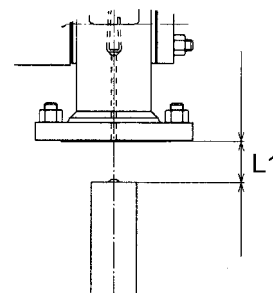


Fig.1

If the bonnet flange size/ pressure rating/ model are not the standard specifications, write down the specifications and consult with sales.

Smart Displacement Type Level Transmitter

Issued : Dec. 25, 2001	Page : 3-1-3
Effective : Dec. 1, 2002	UNIT : 1000YEN

Additional price (1000Yen)

IX	Electrical conduit/ Explosionproof approvals	G1/2/ Watertight	X		0
		G1/2 / JISFlameproof (ExdsIICT3) with 1 pc. of cable gland	1		14
		G1/2 / JIS Flameproof (ExdsIICT4) With 1pc. of cable gland	2		14
		G1/2 / JIS Flameproof (ExdsIICT5) with 1 pc. of cable gland	3		14
		G1/2 / JISFlameproof (ExdsIICT6) with 1pc. of cable gland	4		14
		G1/2 / JIS Flameproof (ExdsIICT3) with 2pcs of cable gland	A		23
		G1/2 / JIS Flameproof (ExdsIICT4) with 2 pcs. of cable gland	B		23
		G1/2 / JIS Flameproof (ExdsIICT5) with 2 pcs. of cable gland	C		23
		G1/2 / JIS Flameproof (ExdsIICT6) with 2 pcs. of cable gland	D		23
		1/2NPT / Watertight	5		0
X	Build-in Indicator	None	X		0
		Scale in % (0 to 100 % liner scale)	1		25
		Engineering unit scale	2		30
XI	Finish	Standard	X		0
		Corrosion-resistant finish	A		11
		Corrosion-proof finish	B		14

XII	No option		X		0
	One elbow for left		1		2
	One elbow for right		2		2
	2 elbows		3		4
	Water free finish (with oil free finish) Only for SUS material	External type : Max. measuring range 300 to 500mm	4		149
		External type : Max. measuring range 600 to 1000mm			191
		Internal type : measuring range ≤ 1000mm			84
	Oil free finish (only for SUS material)	External type : Max. measuring range 300 to 500mm	5		99
		External type : Max. measuring range 600 to 1000mm			127
		Internal type : measuring range ≤ 1000mm			56
	Test report		6		2
	5 points check		7		6
	Material certificate		8		21
	Traceability certificate		A		10
	Color check		B		20
	Without Float *1	Measuring range 0 to 300	C		-42
		0 to 350			-43
		0 to 400			-44
		0 to 450			-45
		0 to 500			-46
		0 to 600			-47
		0 to 700			-48
		0 to 800			-50
		0 to 1000			-52
		0 to 1200			-54
		0 to 1500			-56
		0 to 2000			-61
	Without Chamber *2		D		*3

*1) When Yamatake existing float of "NQI3", "NQI2" and "KQP" is reused, select this option "C".

*2) When Yamatake existing chamber of "NQI3", "NQI2" and "KQP" is reused, select this option "D".

*3) Apply the additional charge of connection type "T" (Internal float top mount).

Smart Displacement Type Level Transmitter

Effective : Mar. 1, 2003	UNIT : 1000YEN
Issued : Mar. 1, 2003	Page : 3-1-3A

Standard specification (Y-SPEC)

Y-SPEC	Product name	Delivery time	Description	Additional price (1,000 yen)
Y-131	Stainless steel bolt	STD	SUS304 is used for bolts and nuts to mount the main body.	* See the list below
Y138□	Silver anti-corrosive coat	STD+0.5 month	See common item for level meter	5 *3)
Y-2054	Complies to Japanese high-pressure gas safety regulations	Consult with us	See common items for analog products	Consult with us

*3) Select anti-corrosive coat type "A" as an additional option in addition to selecting Y138□ when ordering the silver anti-corrosive coating.

Additional price for Y-131

Additional price for Y-131	Additional price (1,000 yen)
Connection type S-S, S-B, T-B, T-S for middle gravity, pressure rating (JIS 10K, 20K, 30K, ANSI/JPI 150, 300)	20
Connection type S-S, S-B, T-B, T-S for low gravity, pressure rating (JIS 10K, 20K, 30K, ANSI/JPI 150, 300)	27
Connection type S-S, S-B, T-B, T-S for middle gravity, pressure rating (JIS 63K, ANSI/JPI 600)	54
Connection type T	10